



**4 THE WOOLMARKET  
CIRENCESTER  
GLOUCESTERSHIRE  
GL7 2PR**

**A prominently located retail unit with excellent double frontage window display situated just off the lower Market Square in the heart of The Woolmarket Shopping Centre**

- 1,292 sq ft (120 sq.m)
- New lease available
- Popular central location

---

## LOCATION

Located in the heart of the town The Woolmarket is a popular shopping centre situated at the junction of the Market Place, Forum Car Park and Dyer Street.

Cirencester is the “Capital of the Cotswolds” and is by far the largest town in the Cotswold District, having a population of around 20,000, and is a thriving historic market town. Cirencester is located roughly mid-way between Swindon, 15 miles to the south-east, and Cheltenham and Gloucester to the north-west. The town is a major centre for the local road network, where 8 ‘A’ Class roads converge on the town, the most important of which, the A419/A417 trunk road, provides the link between the M4 and the M5.

A range of long-standing tenants occupy The Woolmarket including Happy Hounds dog groomers, Chickadee Children’s clothes & gift shop, Crocodile Toy Shop, Ride 24/7 (cycle shop) and Café Mosaic, with Argos and Marks & Spencer Food Store located a short walk away. Cirencester boasts a variety of cafes, shops, national banks and a post office all within walking distance of the shopping centre.

---

## DESCRIPTION

Situated in the very heart of The Woolmarket Shopping Centre the premises comprise excellent and prominent open-plan ground floor retail premises. The unit enjoys prominent double frontage window display onto the shopping centre, with excellent signage opportunity above the display window and double entrance doors.

No4 benefits from a suspended ceiling with spot lighting, wooden flooring throughout, electric heating and its own toilet and kitchen facility.

Ample customer car parking is available in the public car park at the rear of the shopping centre and in The Forum car park located within easy walking distance opposite.

BT & Broadband connections are available subject to the necessary transfers.

---

## ASSESSMENTS

Rateable Value: £23,000.00

Note: Small business rates relief/exemption may be available.

---

## TERMS

**Rent:** £18,000.00 per annum exclusive. Rent is payable quarterly in advance.

**Term:** A new lease is available for a minimum term of 3 years, to be excluded from the security of tenure provisions of the Landlord and Tenant Act 1954.

**Repairs:** Tenant will be responsible for internal repairs, upkeep of the shop front and redecoration in the last 3 months of the term.

**Deposit:** A 3 month rent deposit will be required.

**Insurance:** Landlord insures the building, the Tenant reimburses the cost of the insurance premium approximately £306.00 per annum. The Tenant is responsible for their own contents insurance and the plate glass.

---

## ACCOMMODATION

The measurements are approximate

Retail	44'7 x30'2
Front window display- width 11,	11'4"x5'7"
Side window display	8'2"x5'

---

## VAT

VAT is payable in addition to the passing rent, service charge, insurance and deposit.

---

## SERVICE CHARGE

A service charge of £2,300.00 per annum will be payable to the Landlord for the cost of services to both the internal and external common parts, including a part time caretaker who opens up and closes at 18.30 (private access available), CCTV, watering/management of all tubs, pots and Box planters.

---

## SERVICES

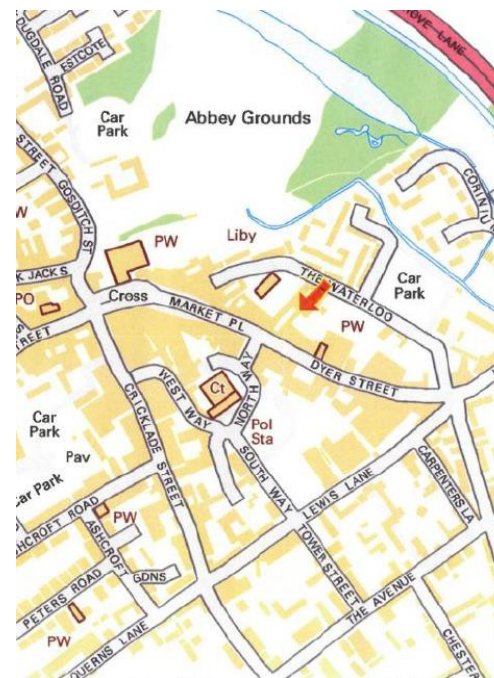
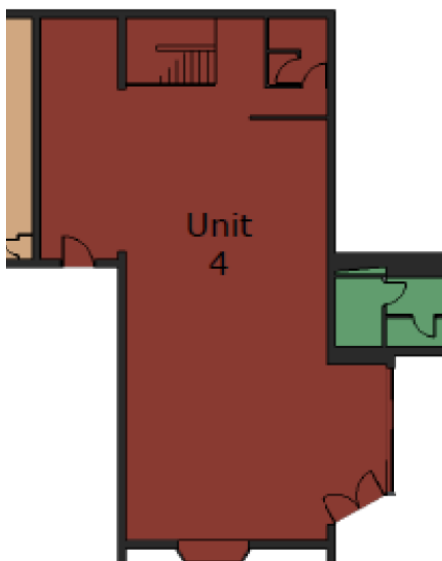
Mains electricity and drainage are connected to the premises.

---

## LEGAL COSTS

Each party shall be responsible for their own legal fees in connection with this transaction.

---



**Viewing strictly via:**

Sophie.Salvidge FARLA

[Sophie.Salvidge@carterjonas.co.uk](mailto:Sophie.Salvidge@carterjonas.co.uk)

Tel: 01865 404473

Mayfield House, 256 Banbury Road, Oxford, OX2 7DE

**Joint Agent:**

Thomson & Partners

[suveyors@thomsonandpartners.co.uk](mailto:suveyors@thomsonandpartners.co.uk)

Tel: 01285 647333

45 Dyer Street, Cirencester, GL7 2PP

**IMPORTANT INFORMATION**

These particulars are for general information purposes only and do not represent an offer of contract or part of one. Carter Jonas has made every attempt to ensure that the particulars and other information provided are as accurate as possible and are not intended to amount to advice on which you should rely as being factually accurate. You should not assumed that the property has all necessary planning, building regulations or other consents and Carter Jonas have not tested any services, facilities or equipment. Any measurements and distances given are approximate only. Purchasers must satisfy themselves of all of the aforementioned by independent inspection or otherwise. Although we make reasonable efforts to update our information, neither Carter Jonas LLP nor anyone in its employment or acting on its behalf makes any representations warranties or guarantees, whether express or implied, in relation to the property, or that the content in these particulars is accurate, complete or up to date. Our images only represent part of the property as it appeared at the time they were taken. If you require further information please contact us.

**Carter Jonas**